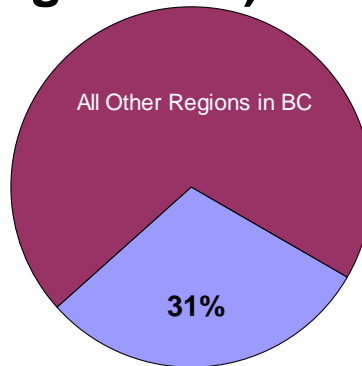
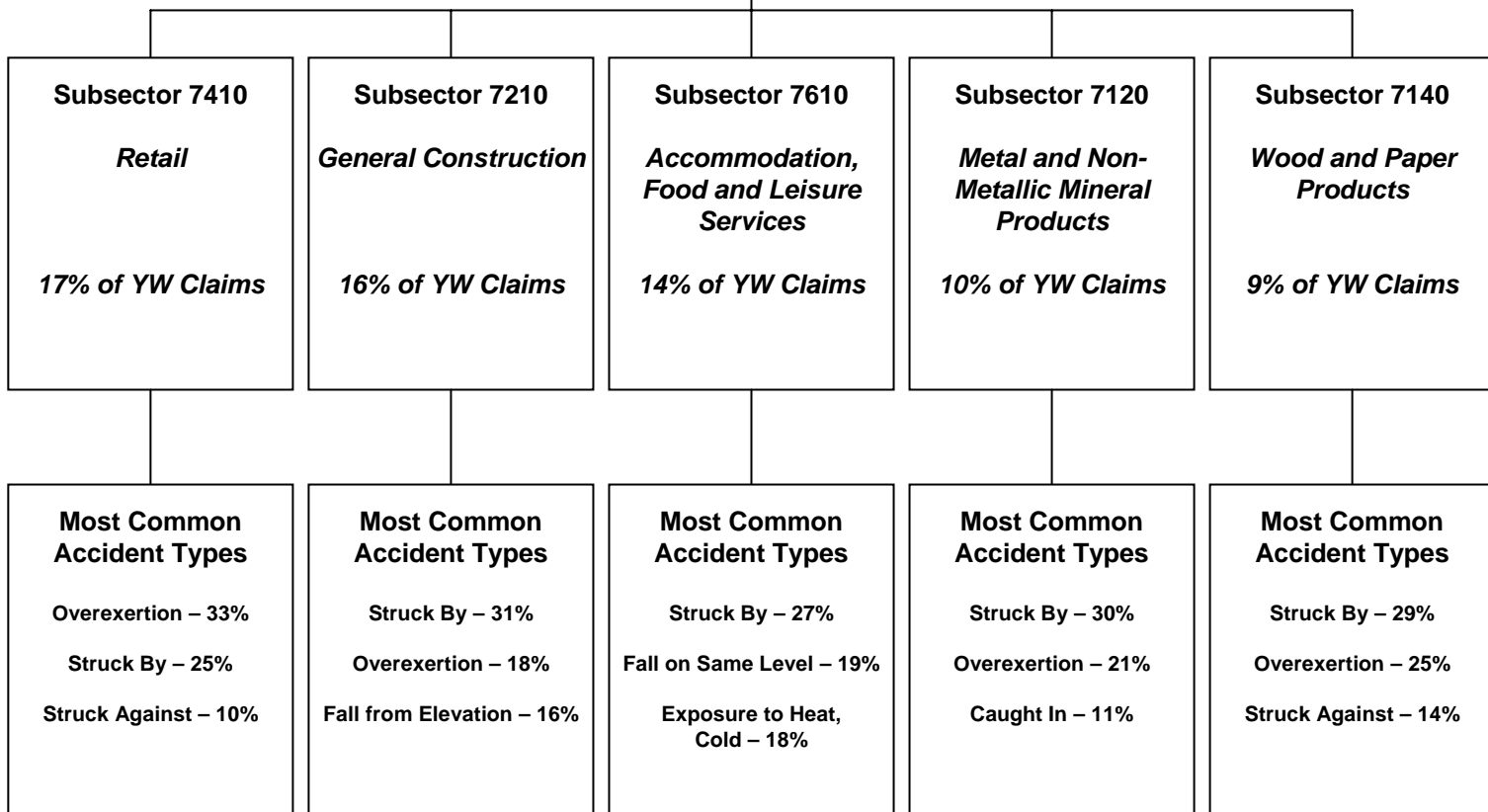


Fraser Valley

Young Worker (Age 15-24) Claim Hierarchy Tree



Fraser Valley (2002-2006)
14,558 Young Worker Time-Loss Claims



Within the Most Common Accident Types shown above:

- “Struck By” represents specific accident types that include “Struck by Falling Object” and “Struck by Slipping Handheld Object”, among others.
- “Overexertion” represents specific accident types that include “Overexertion in Lifting” and “Overexertion in Pulling, Pushing Objects”, among others.
- “Caught In” represents specific accident types that include “Caught in, Compressed by Equipment, Objects, NEC” and “Caught in Running Equipment or Machinery”, among others.

Note: Fraser Valley includes Surrey, Langley, Coquitlam and Abbotsford regions.

Subsectors shown above are the top 5 based on a ranking of young worker time-loss claims volume between 2002 and 2006 for the region.

Fraser Valley

Young Worker (Age 15-24) Fact Sheet

Young Worker Time-Loss Claims Accepted Between 2002 and 2006 – Fraser Valley

- In the Fraser Valley, approximately 77% of young worker time-loss claims accepted between 2002 and 2006 relate to males.

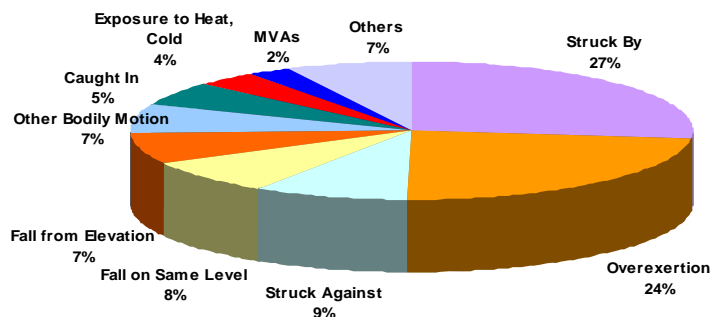
	2002	2003	2004	2005	2006	2002-2006 % of YW for Region
Female - Age 15-24	641	633	623	739	687	23%
Male - Age 15-24	2,044	2,049	2,153	2,431	2,531	77%
Unspecified - Age 15-24	8	4	3	2	10	
Total - Age 15-24	2,693	2,686	2,779	3,172	3,228	100%

Young Worker Claim Costs and Days Lost – Fraser Valley

- Between 2002 and 2006, approximately \$59,041,000 in claim costs were paid relating to young worker claims for the Fraser Valley, regardless of the year of injury.
- Between 2002 and 2006, approximately 314,000 work days were lost for young worker claims in the Fraser Valley, regardless of the year of injury.

Young Worker Claim Characteristics – Fraser Valley Overall

Top Accidents in Fraser Valley (2002-2006)



Top Injury Types in Fraser Valley (2002-2006)

